

# Sandy Point Newsletter December 2023

---



Wishing Everyone Happy Holidays

---

## Look what's in this issue....

- Welcome to new Sandy Point Residents
- HOA fee increase for 2024
- Boat Storage Reminder
- Book Club
- Fall Pickleball

- Honeysuckle the Sweet Killer

WHAT'S NEW?

WHAT'S NEW?

## Welcome to our New Sandy Point Residents

Please welcome our new Sandy Point neighbors:

Barry J. Baker and Geri Nestel who have moved into 8156 RBDE, and Jay and Liz Moser who reside at 2945 RBDN.



## New HOA Fee Effective 1/1/2024

The Sandy Point Annual Meeting was held on Thursday, October 26, 2023. The homeowners voted to increase the monthly HOA Fee by \$10.00/month. The new fee of \$355.00/month will begin in January 2024.

Per the Automatic Payment Authorization contract, you have authorized that, when the Association dues change, the amended amount will be withdrawn from your account. Therefore, no action on your part is required at this time.

## Boat Storage Reminder

For security and maintenance reasons, when storing your pontoons, please place your Bimini tops completely in the down position or flat on your boat. Snow, ice buildup, and wind damage has occurred many times to our boat owners in our Sandy Point boat storage area, and we want to avoid damage if possible.

Thank you!





## Book Club

We are happy to report that the Sandy Point Book Club is up and running. For those interested in being involved, mark the first Tuesday of each month from 3:30 – 5:00. On December 5, please feel free to attend, share ideas, and get to know each other better. We thought that initially we would not have an assigned book to read but rather, at each meeting, those who want to can share a little synopsis of what they consider a “good read” and why they consider it so. No marketing hypes!!!! Just honest opinions. From those little reviews, we can compile a list of recommendations for future reading of genres that appeal. We’ll try this formula and the door is always open for new ideas. Questions: Gail McDermott-Bowler, 8134 RBDE, [gailronbe@gmail.com](mailto:gailronbe@gmail.com). Happy reading and idea sharing.

---

## Fall Pickleball at Sandy Point

At Sandy Point recently, several "pickleballers" were thrilled to be able to play outside in mid-November. Hmm, seems like their minds were on Thanksgiving.



---

## From the Grounds Committee



## Honeysuckle the Sweet Killer

By: Horst Merkle

Some states classify Amur Honeysuckle “Enemy of State” and that is for good reason, as it takes over large parts of our environment. This year’s fall at Sandy Point seems especially beautiful to me and

while I see the new neighbors moving in across the inlet (welcome neighbors!), it reminds me why people want to live here. Our houses are embedded in a unique environment: The river, it's inlets, the grass- and wetlands, the woods are natural resources all within reach of a 15 minutes walk. Without sounding dramatic, these wonderful resources are threatened by invasive plants. Running the risk that some of our longtime residents know about the issue or even have been involved in Honeysuckle removal in the past, I thought it might be useful to provide some information about the issue at hand. The Marion County Soil and Water Conservation District lists 26 invasive plants in the county and the Asian Bush or Amur Honeysuckle (*Lonicera Maackii*) is one of the most prolific invasive species on that list. And "Yes", the honeysuckle berries are sweet, bitter sweet and not for human consumption.

### What makes Amur Honeysuckle so harmful?

Imported from Asia in the 19th century as fast growing ornamental plant and to mitigate erosion combined with a high tolerance for a variety of climates, soil and moisture conditions, Honeysuckle thrives in landscapes like ours to a point that it dominates whole ecosystems within a few years if left unmanaged. It has a sophisticated arsenal of weapons at its disposal to create a plant monoculture which severely reduces biodiversity not only in the vegetation, but across the entire food chain, from microorganisms, to worms, mollusks, nematodes all the way up to birds, small and larger mammals. Even aquatic life can be negatively impacted by larger Honeysuckle colonies along river banks and shorelines. Amur honeysuckle has the potential to negatively and sustainably impact whole ecosystems. On that note, due to its shallow root system Honeysuckle is actually not a good choice to control erosion of riverbanks.



### How big is the honeysuckle problem ?

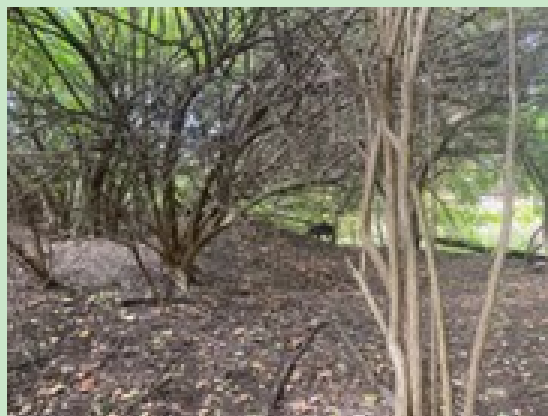
Serious might be a fair description. The map above outlines the estimated degree of infestation in our nature preserve around the tennis courts. We estimate that on average about 60-70% of all wooded vegetation of that area is honeysuckle.

There is however a sizable area underneath the lattice tower near the

green bench that shows close to 100% honeysuckle (marked in red) with very large honeysuckle trees of up to 10 inch diameter. The dense growth and leaf canopy makes the place almost impenetrable and dark and as a result there is basically no undergrowth, not even leaves on the ground - a honeysuckle monoculture. Compare the attached pictures of that area to that of the river bank at Oliver's Woods Nature Preserve. Both pictures were taken early Nov. 2023. Managing honeysuckle is much more than removal of the plants. It is a labor and resource intense, long-term commitment. Sandy Point has a long history of combating the invasion with quite positive outcomes. The grounds committee continues the reclaiming of affected areas with a plan and an allocated budget in 2024 and the coming years. Stay tuned for more information about what we plan to do, why and how



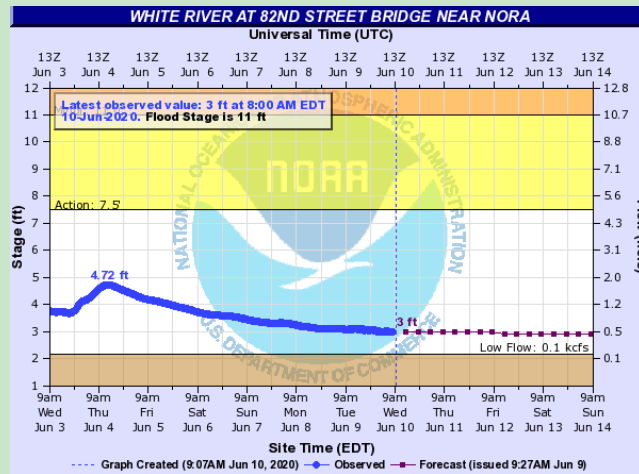
The river banks at Oliver's Woods Nature Preserve



A Honeysuckle monoculture at Sandy Point

Below is a screen shot of the Water level on the White River as taken at the 82nd Bridge location.

- Many folks care to know what it is from time to time. To get this current information you may click "**Here**" or on the image. Both will take you to todays forecast.



**Below are the important connections to the website and contact information for the Sandy Point Website Community**

[Click here to go directly to the website](#)

**8077 River Bay Drive East - Indianapolis, IN 46240**

**Office Hours: Monday through Friday 8:00 AM - 5:00PM**

*From time to time you may have a question and not know the answer or to whom to ask the question.*

[Email President](#)

[Email Property Manager](#)

[Email Webmaster](#)

Sandy Point HOA | 8077 River Bay Drive East, indianapolis, IN 46240

[Unsubscribe spmgr@sandypointcondos.com](mailto:unsubscribe_spmgr@sandypointcondos.com)

[Update Profile](#) | [Constant Contact Data Notice](#)

Sent bynshields@pscindy.com powered by



Try email marketing for free today!